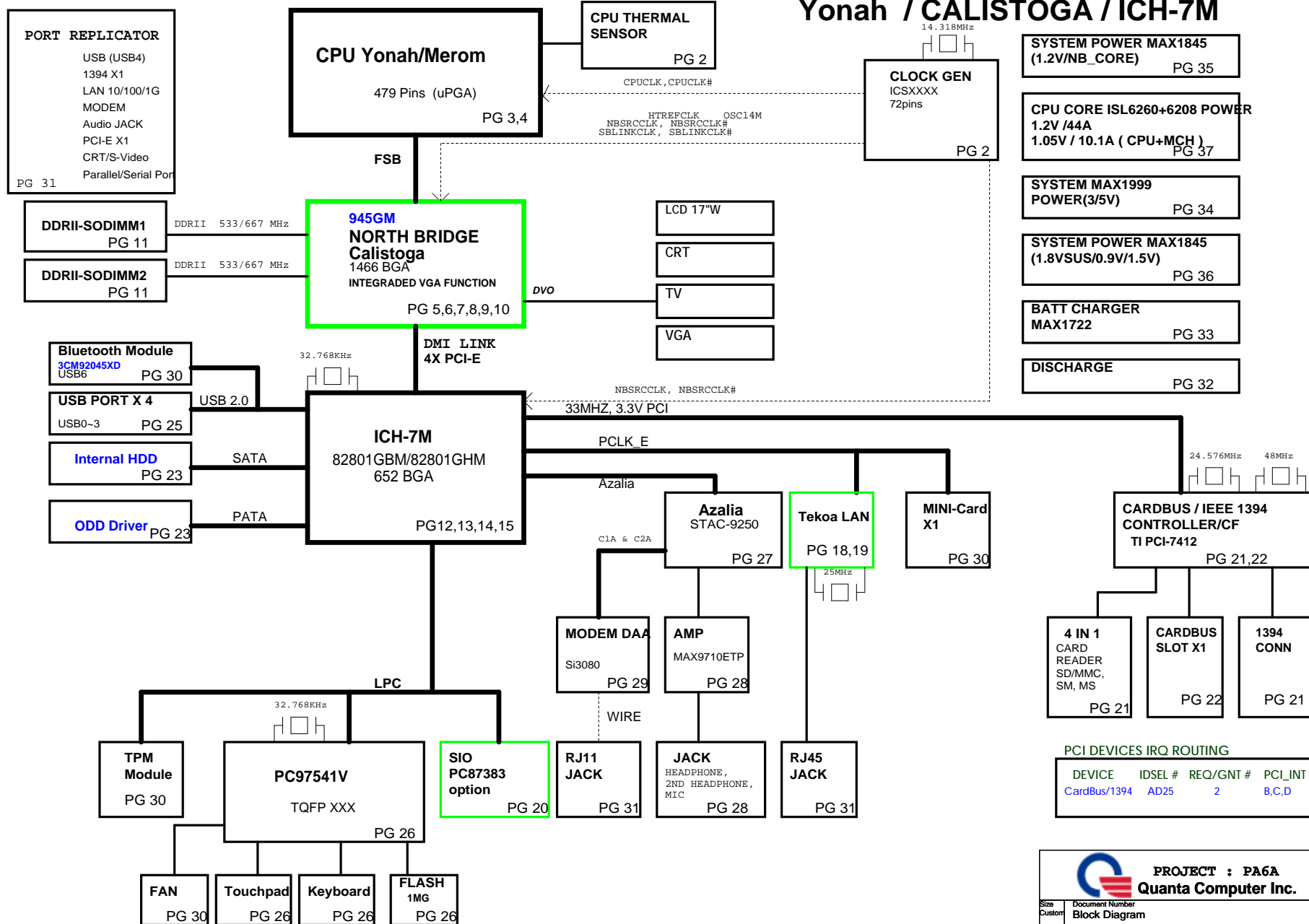
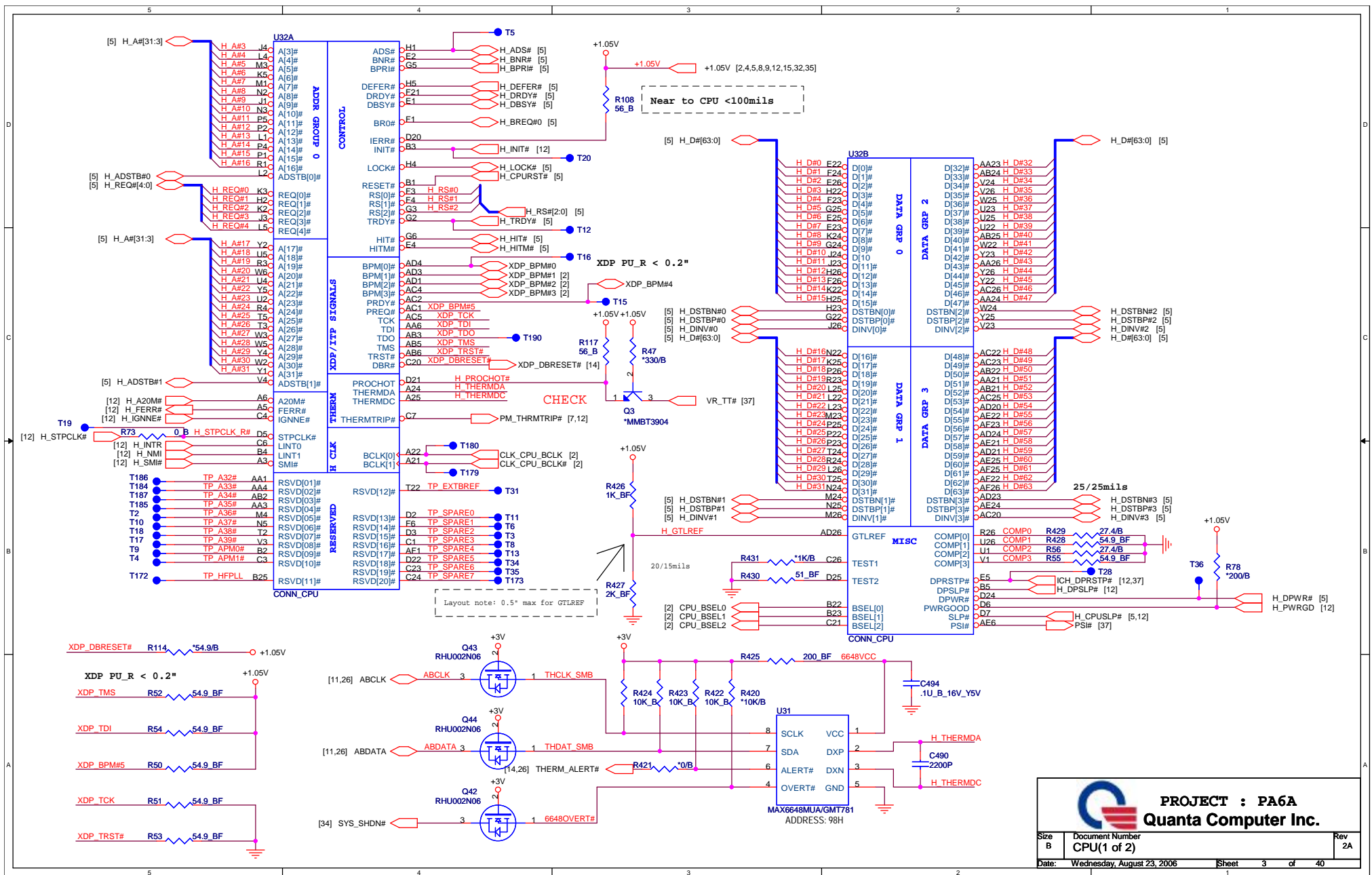


# PA6A BLOCK DIAGRAM

Yonah / CALISTOGA / ICH-7M

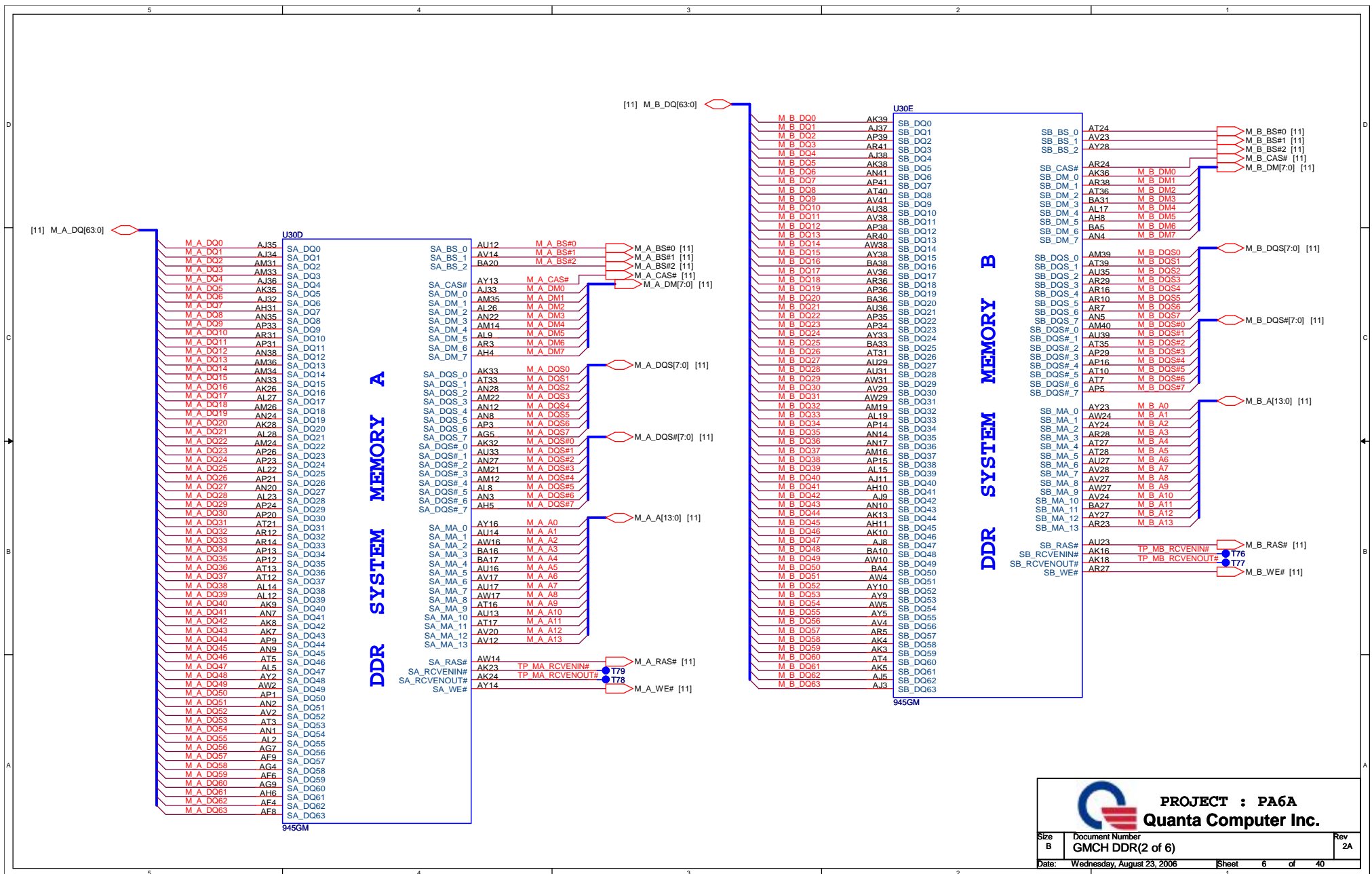






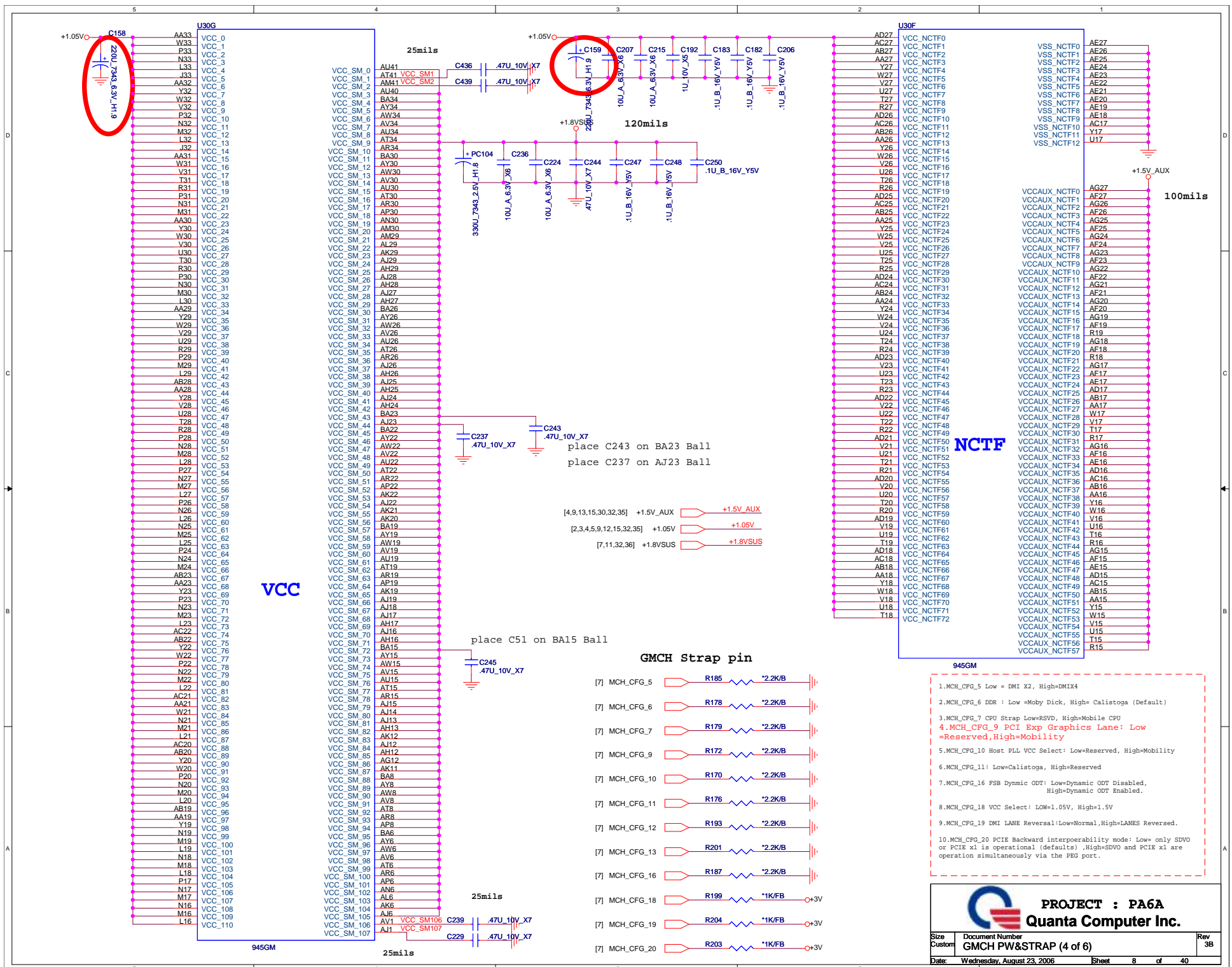




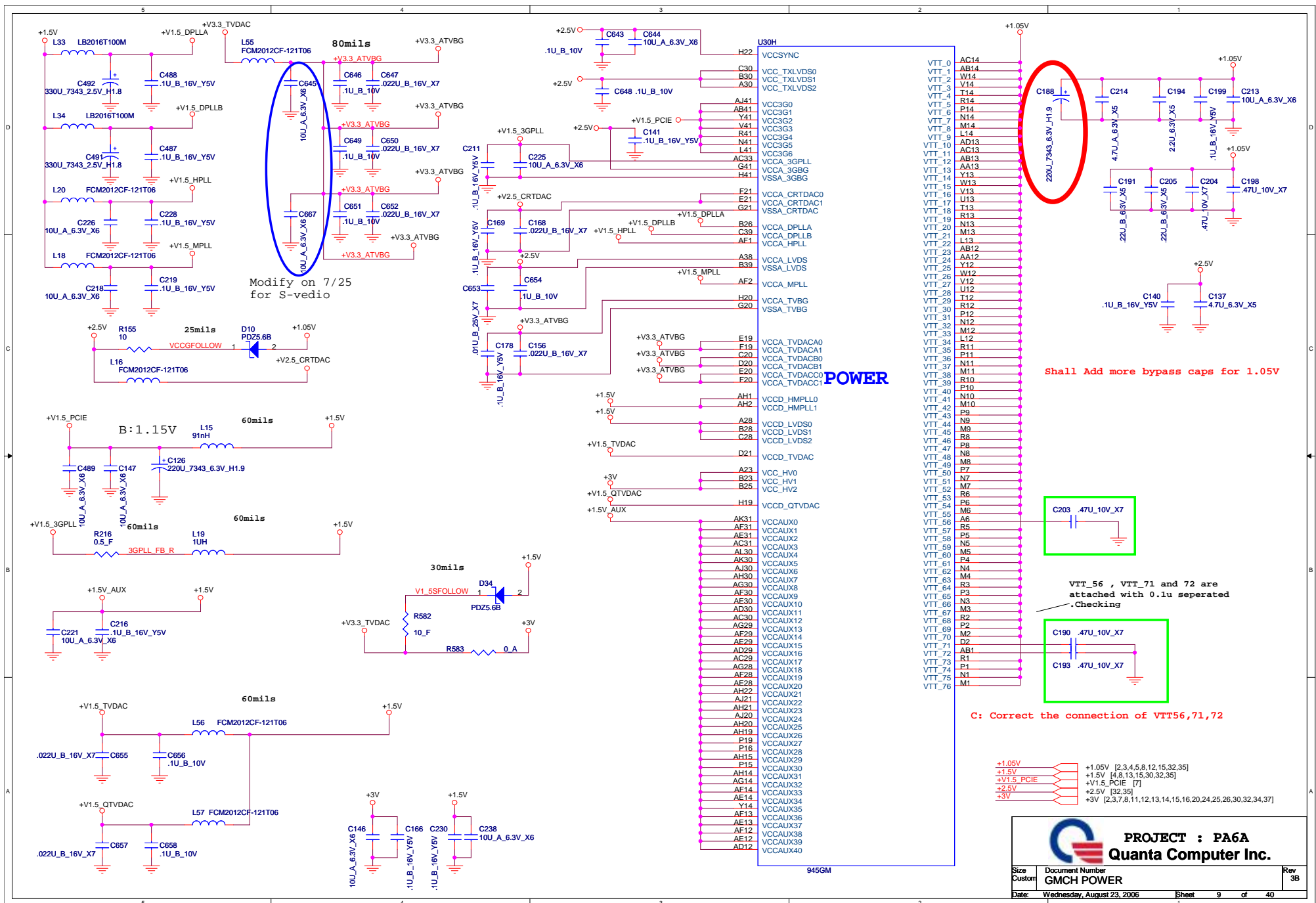


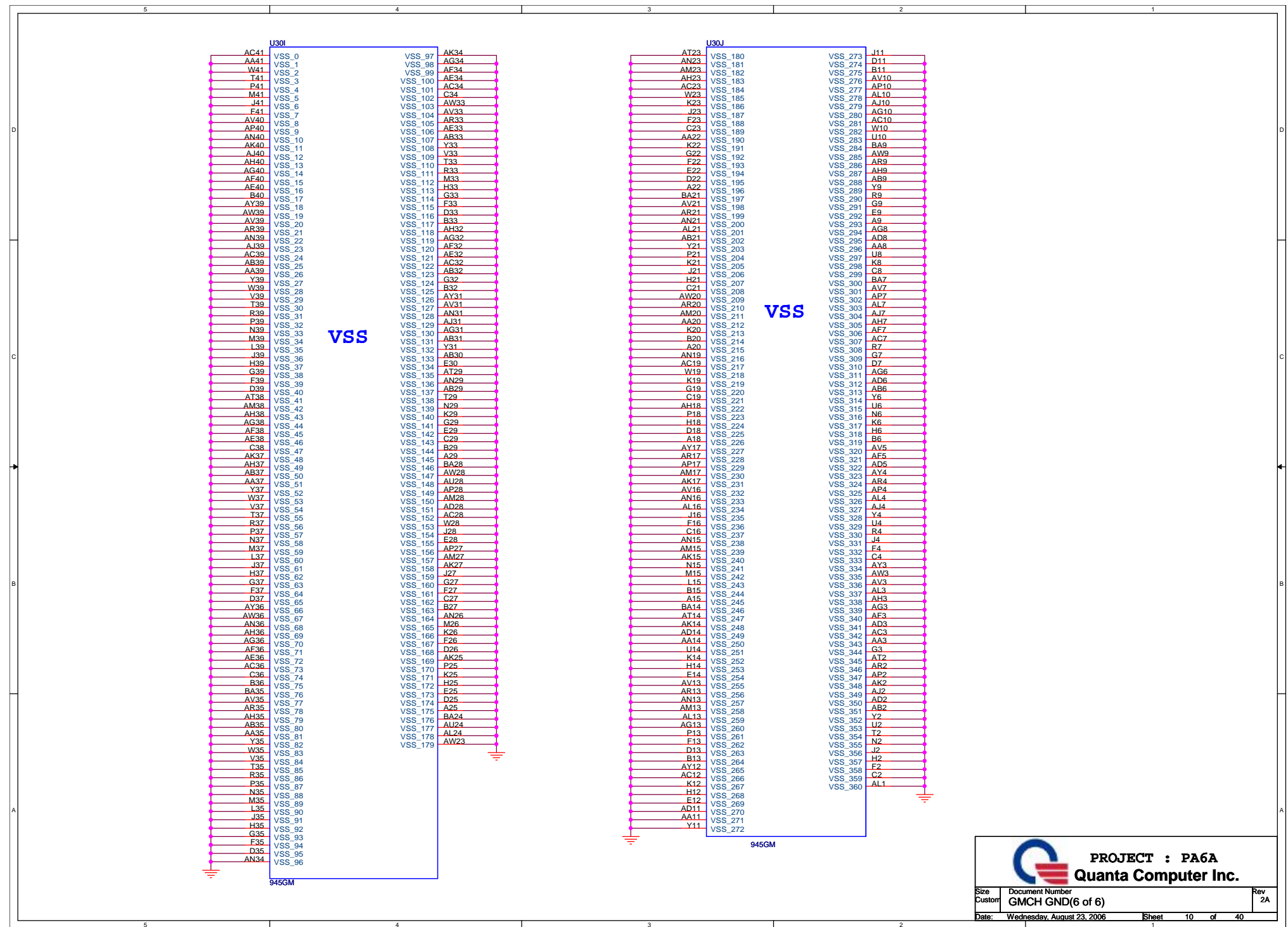












**PROJECT : PA6A**

**Quanta Computer Inc.**

Size	Document Number	Rev
Custom	GMCH GND(6 of 6)	2A
Date:	Wednesday, August 23, 2006	Sheet 10 of 40



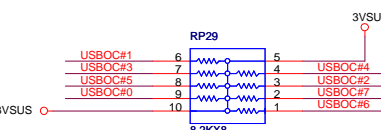
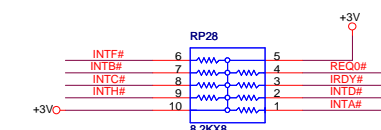
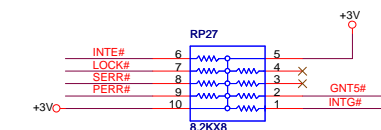
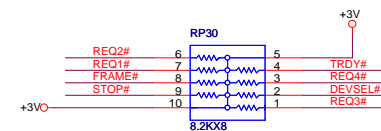
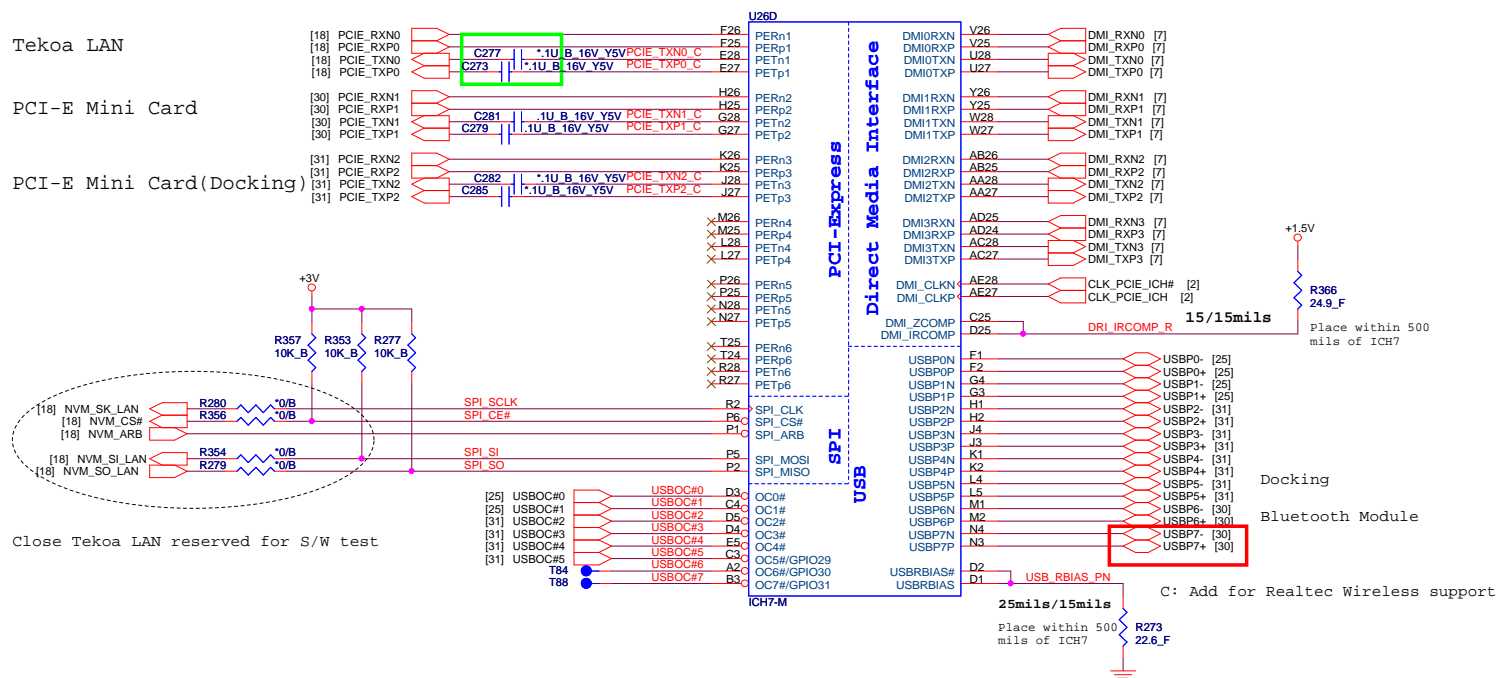


Tekoa LAN

PCI-E Mini Card

PCI-E Mini Card(Docking)

Close Tekoa LAN reserved for S/W test



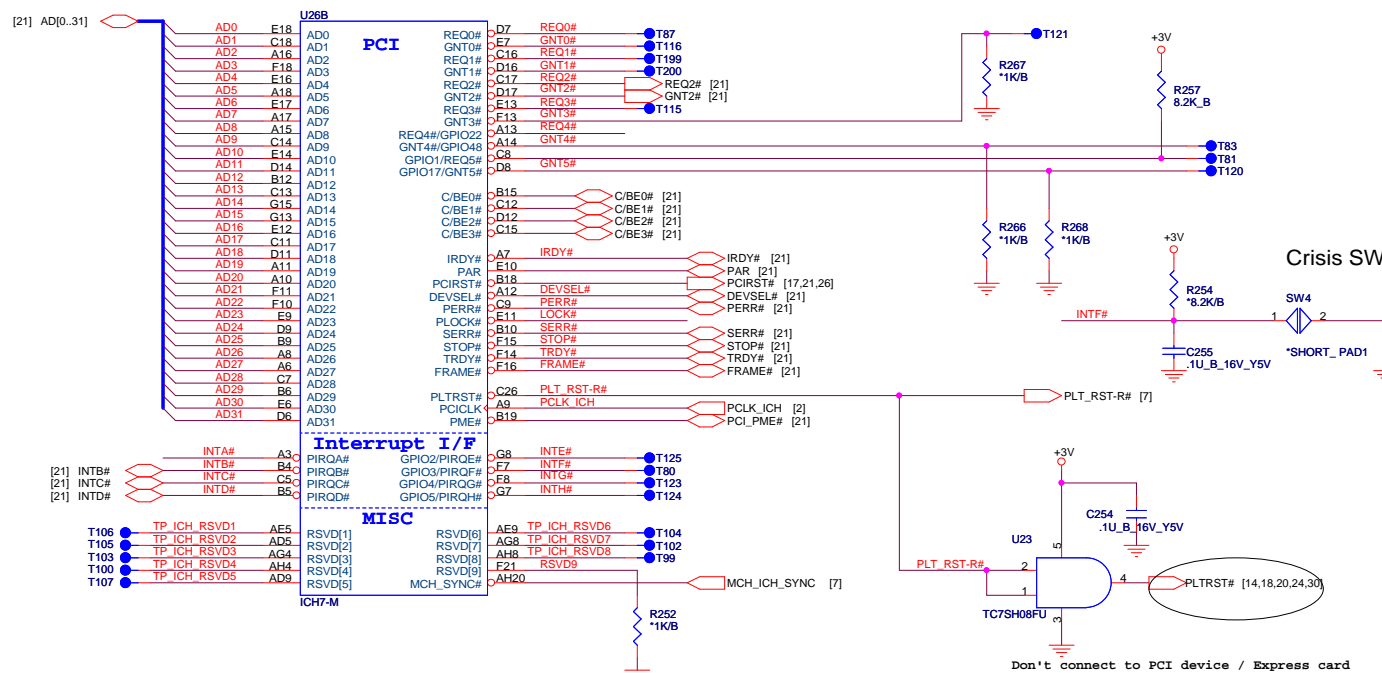
CKL use 10Kohm

Docking  
Bluetooth Module

C: Add for Realtek Wireless support

ICH7 Boot BIOS select

	STRAP	GNT5# R1	GNT4# R2
LPC (default)	11	UNSTUFF	UNSTUFF
PCI	10	UNSTUFF	STUFF
SPI	01	STUFF	UNSTUFF



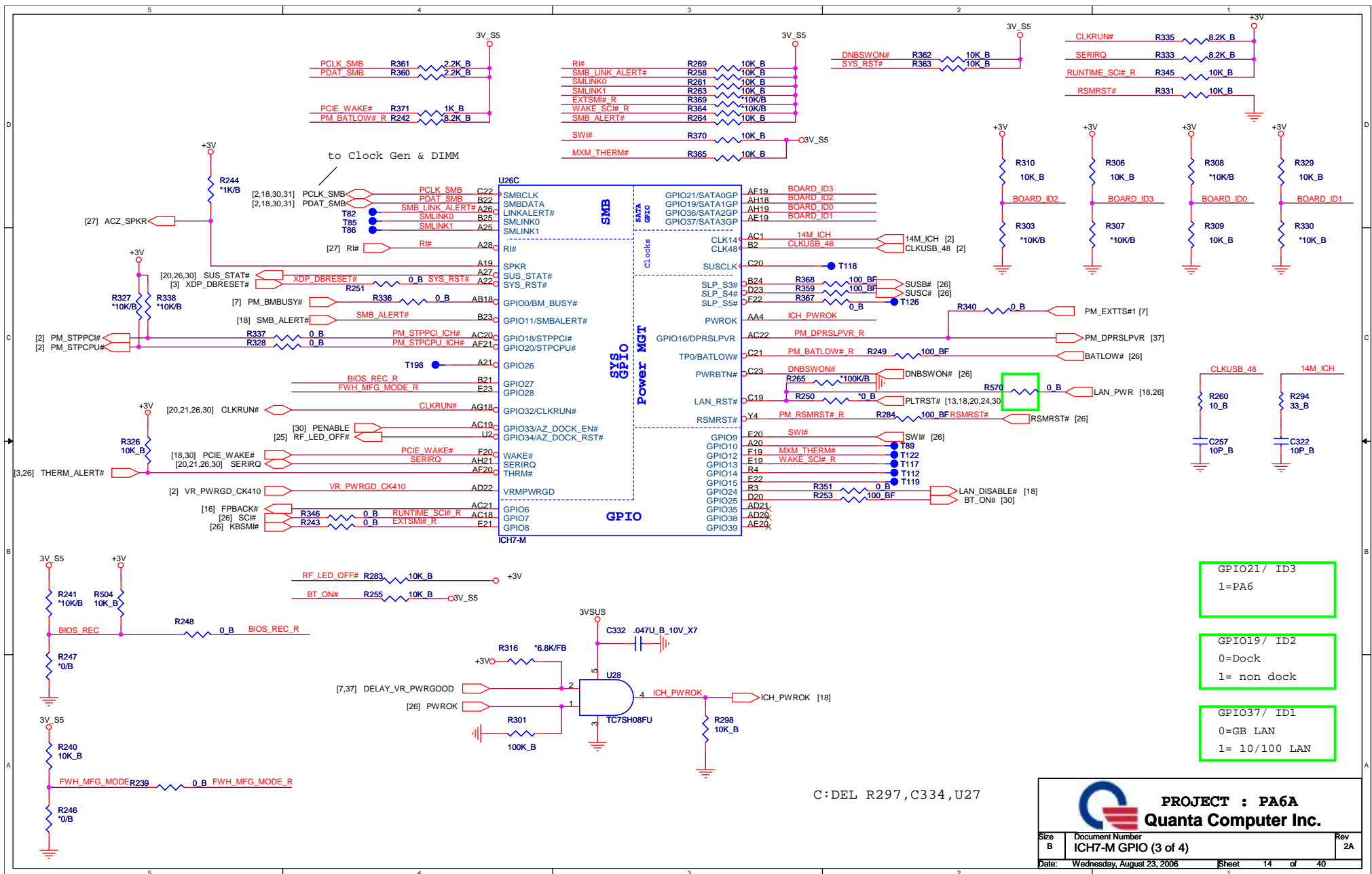
Crisis SW

PCI DEVICE	IDSEL#	REQ# / GNT#	Interrupts
PCI7412	AD25	REQ2# / GNT2#	INT B/C/D#

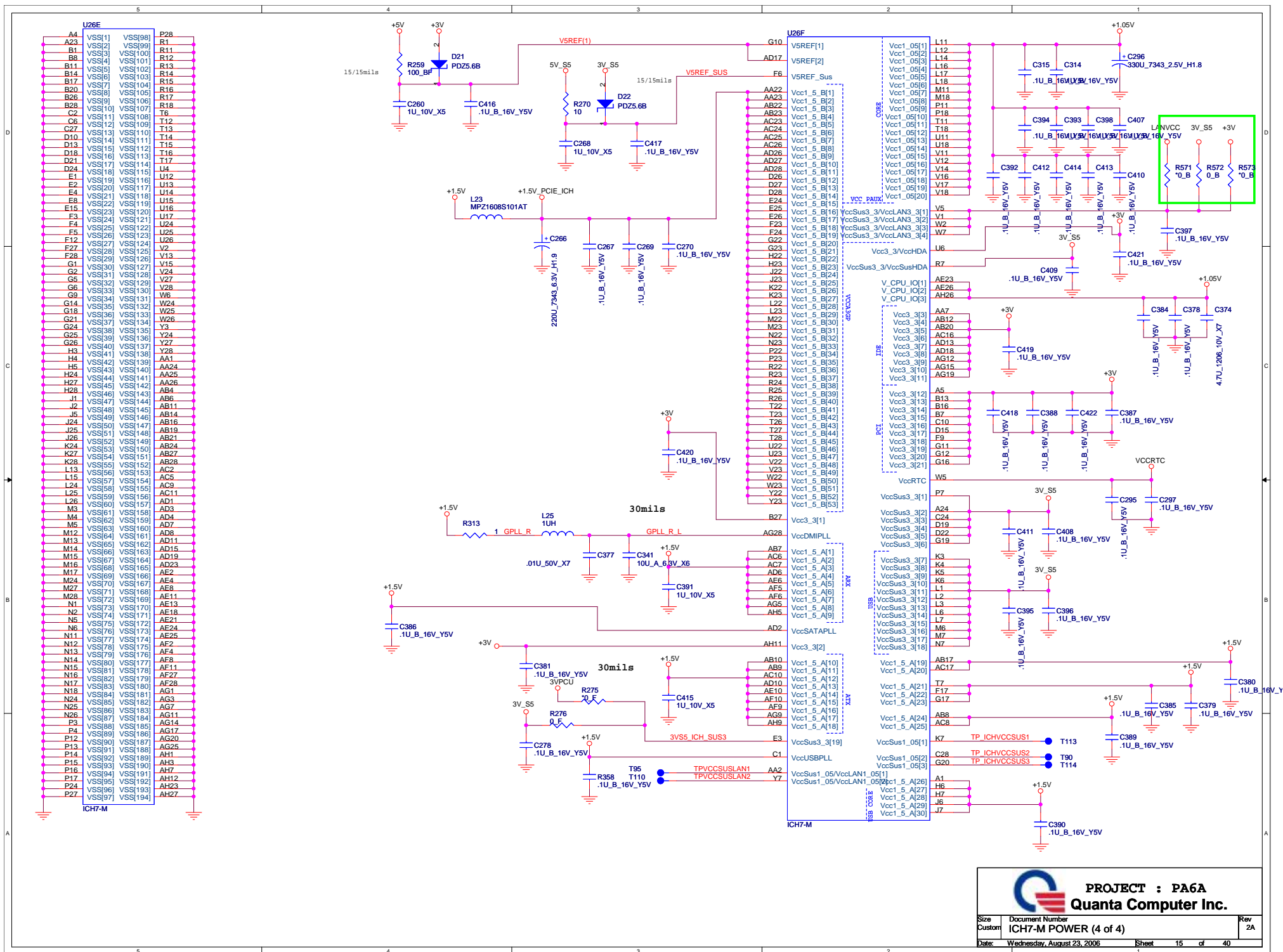


**PROJECT : PA6A**  
**Quanta Computer Inc.**

Size	Document Number	Rev
Custom	ICH7-M PCI-E(2 of 4)	3A
Date:	Wednesday, August 23, 2006	Sheet 13 of 40







**PANEL VCC CONTROL**

Change voltage 8/10

5VPCU

Change P/N 7/28

+3V

R80 10K\_B

R85 10K\_B

Q7 S3443DV

Q8 DTC144EUA

3V

10K\_B

5VPCU

24mil

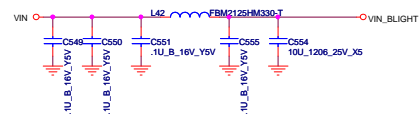
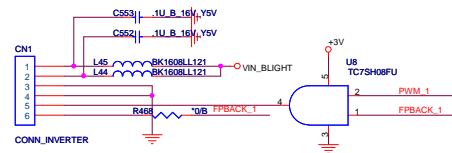
[7] DISP\_ON

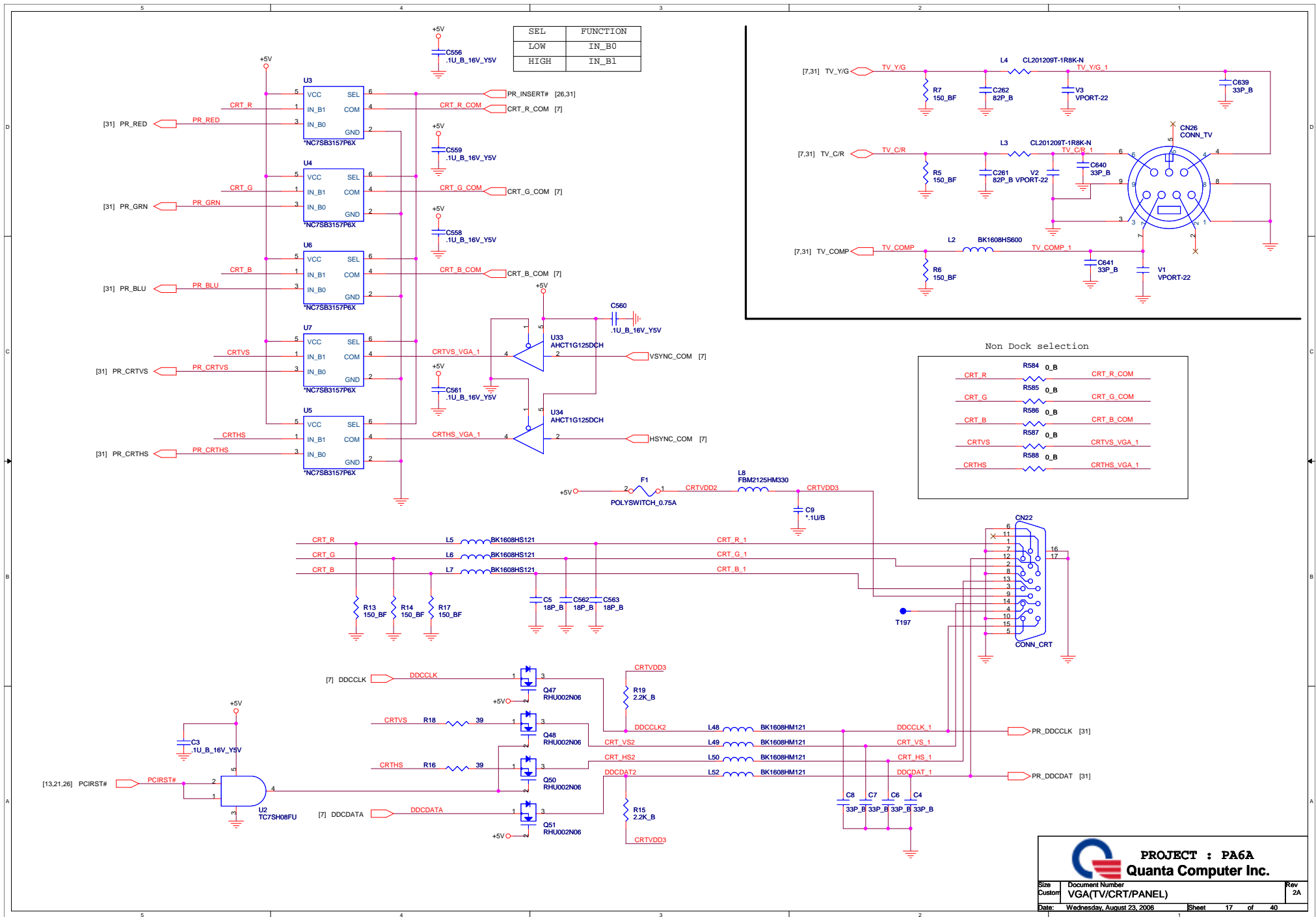
DISP\_ON

LCDVCC

C54 10uA\_10V\_Y5U

C55 10uA\_16V\_Y5V

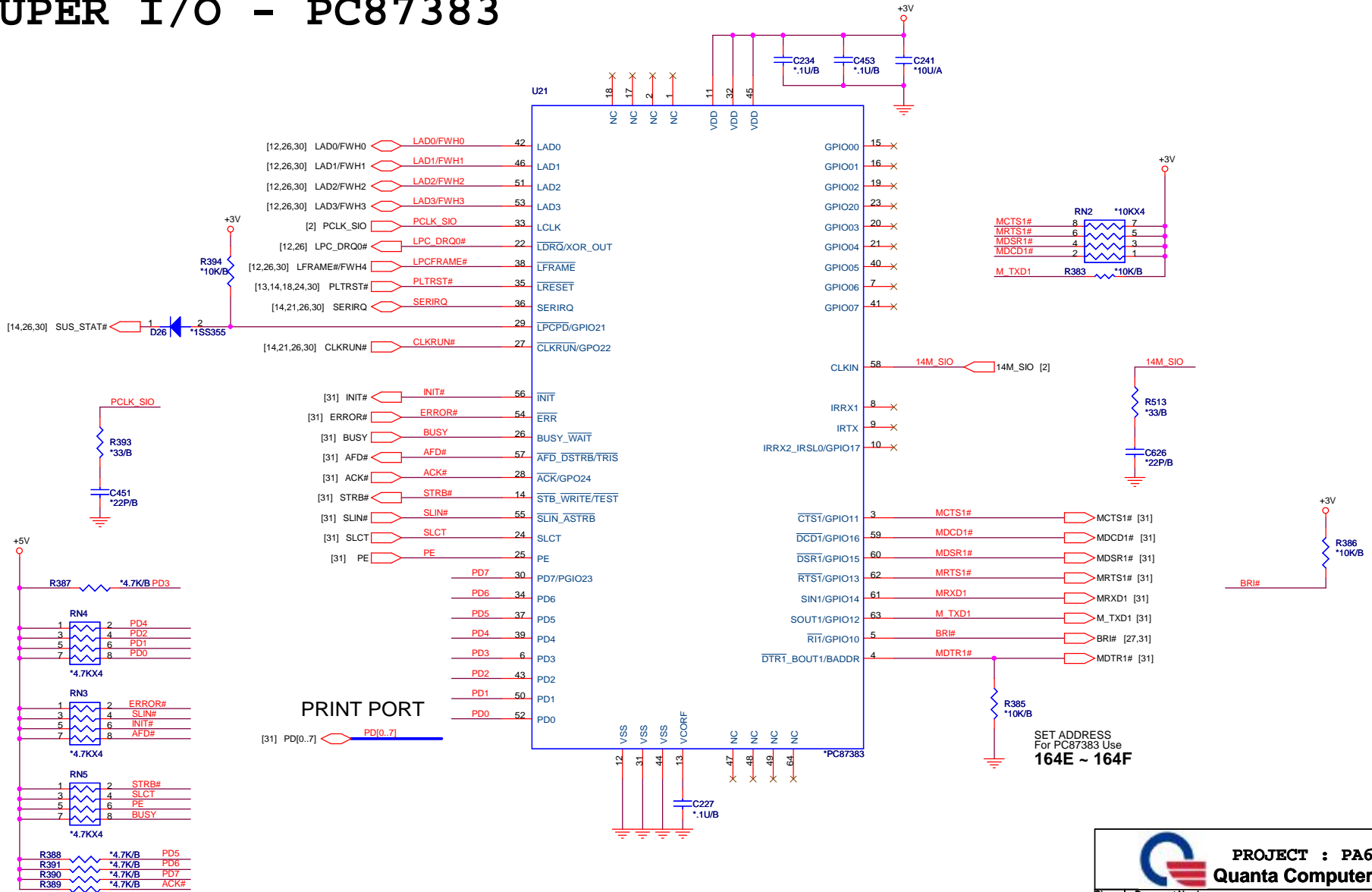
[illegible]







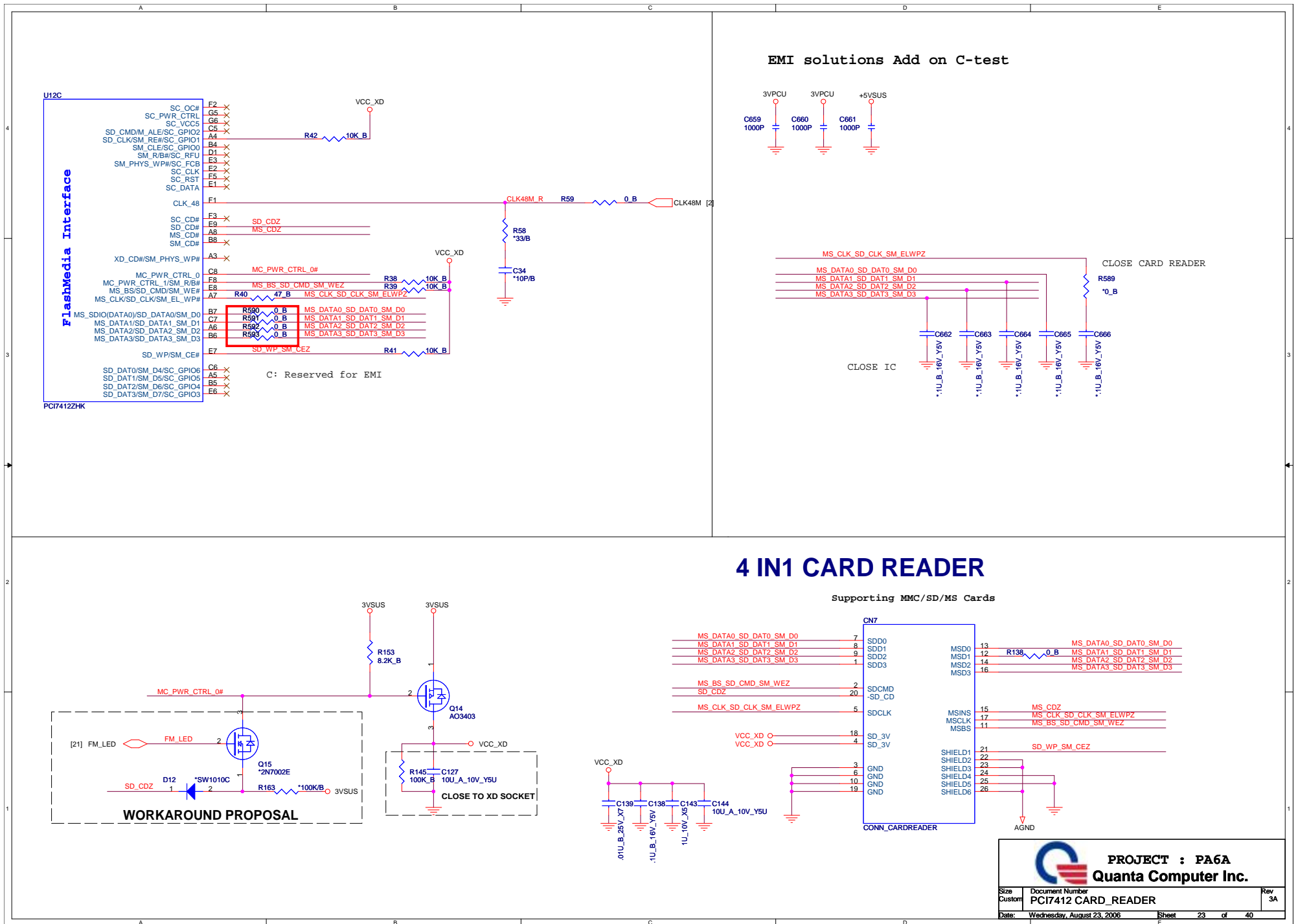
# SUPER I/O - PC87383



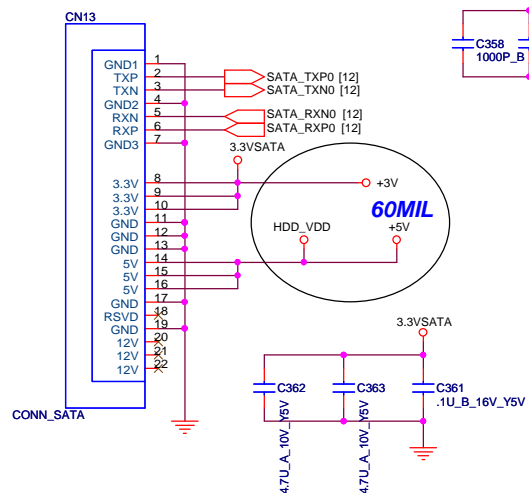




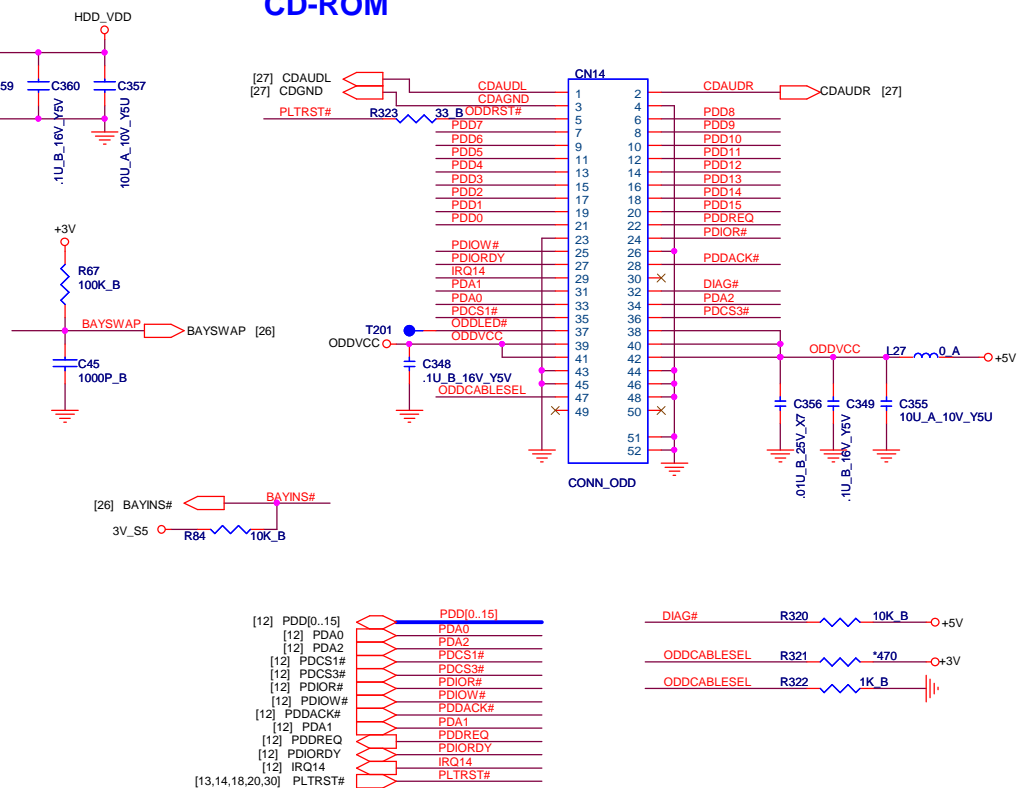




## SATA CONNECTOR



## CD-ROM



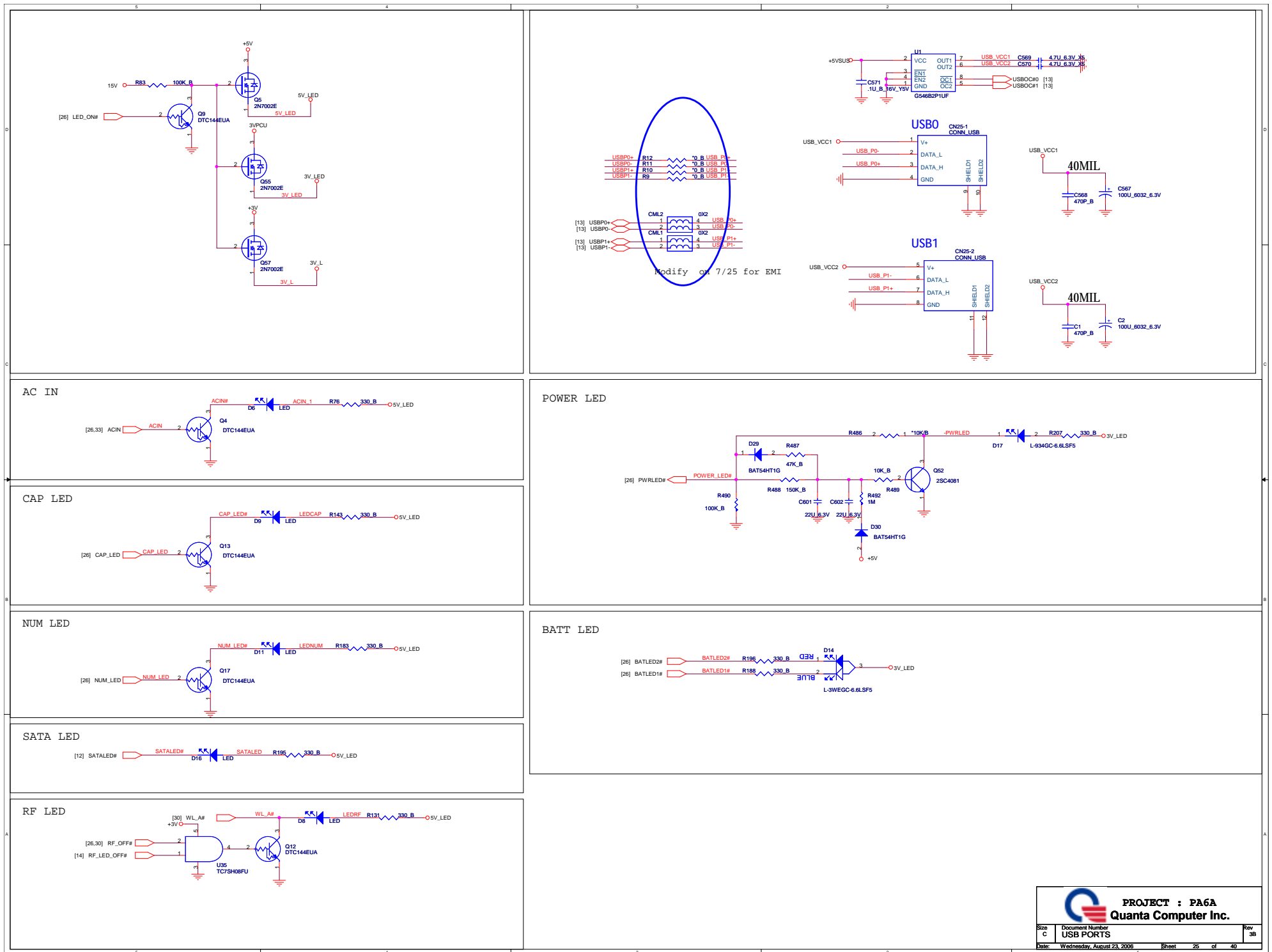
**PLACEMENT NOTICE :**

1. PUT THE BYPASS CAP AND INDUCTOR NEAR THE HDD AND ODD CONNECTOR
2. ALL DAMPING RESISTORS SHOULD NEAR ODD AND HDD CONNECTOR RESPECTIVELY
3. ALL PULLUP AND PULLDN SHOULD NEAR THE CONNECTOR
4. ALL IDE TRACE SHOULD KEEP 5:15 ID POSSIBLE AND 5:10 IS MINIMUM REQUIREMENT

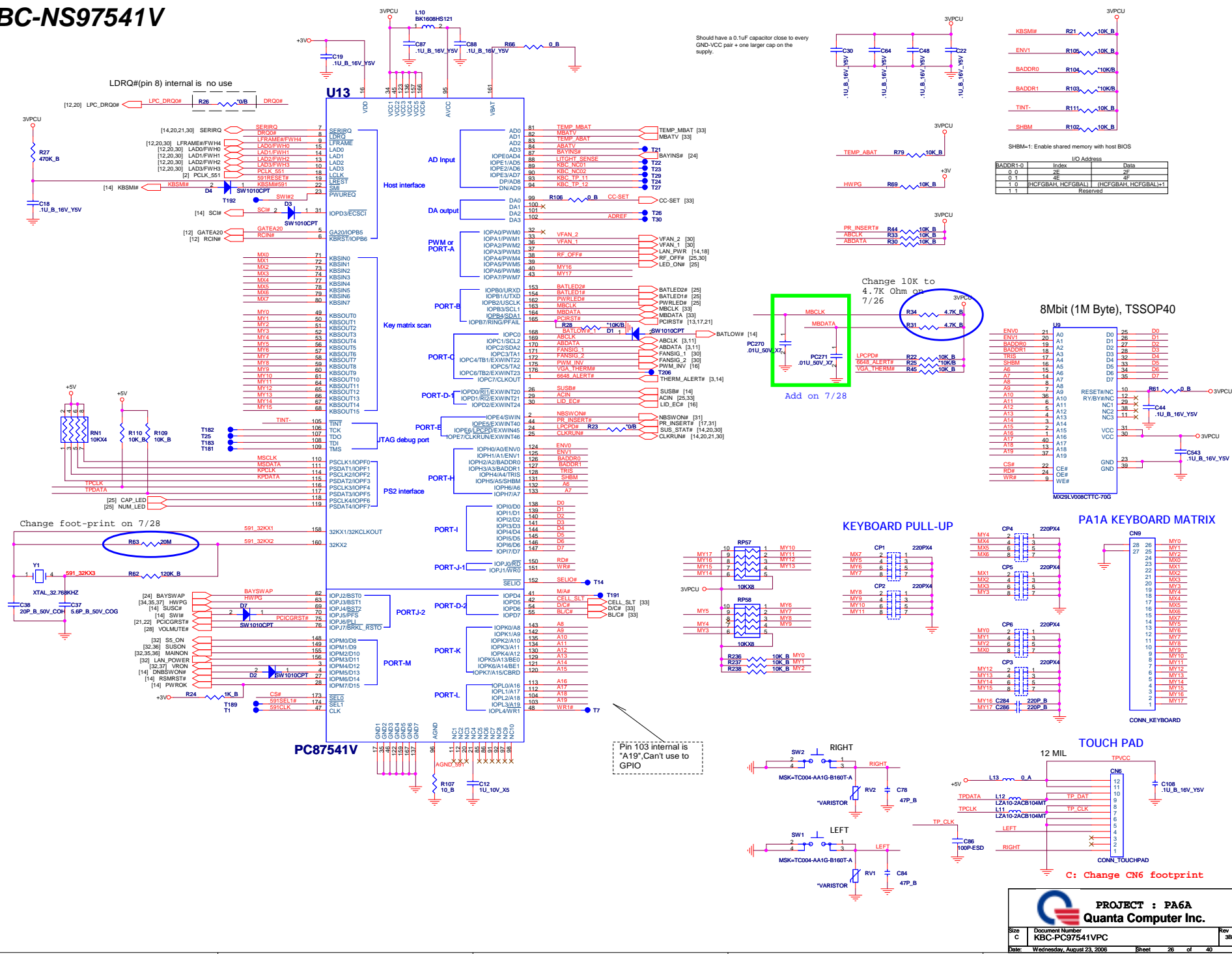


**PROJECT : PA6A**  
**Quanta Computer Inc.**

Size B	Document Number SATA HDD, CD-ROM	Rev 2A
Date:	Wednesday, August 23, 2006	Sheet 24 of 40



***KBC-NS97541V***

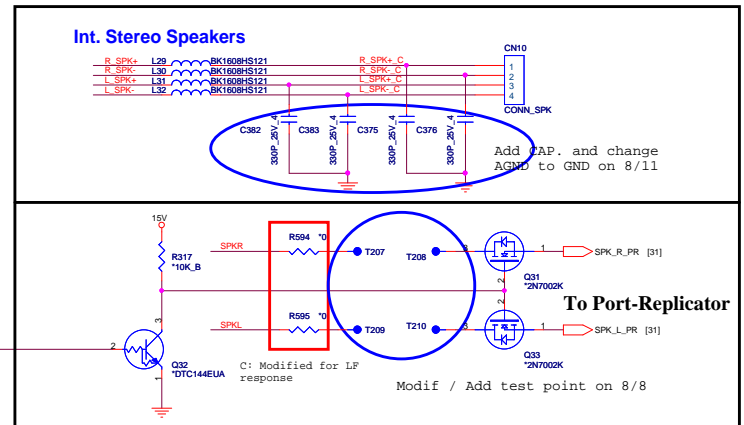
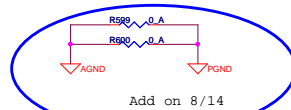
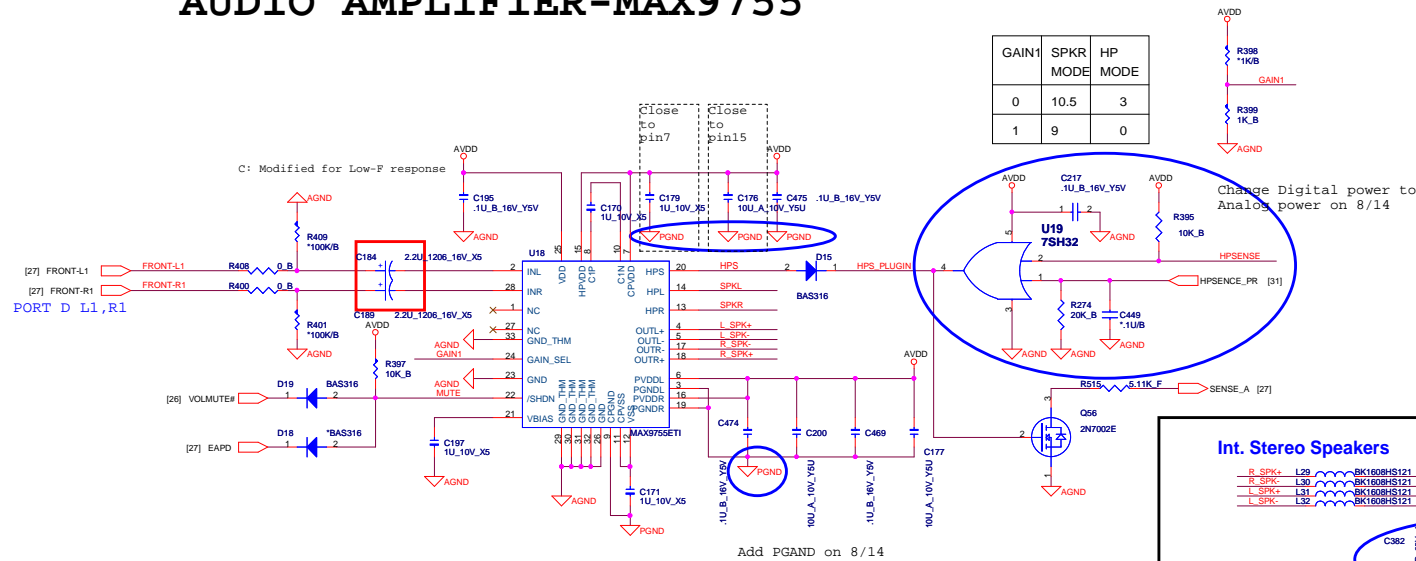






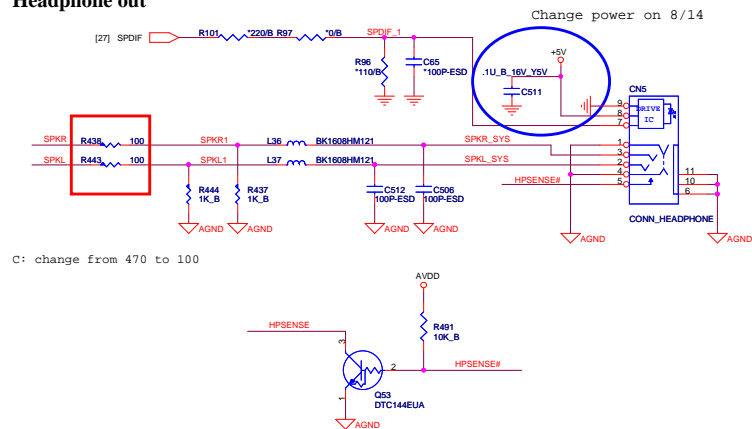
# AUDIO AMPLIFIER-MAX9755

GAIN1	SPKR MODE	HP MODE
0	10.5	3
1	9	0

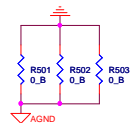
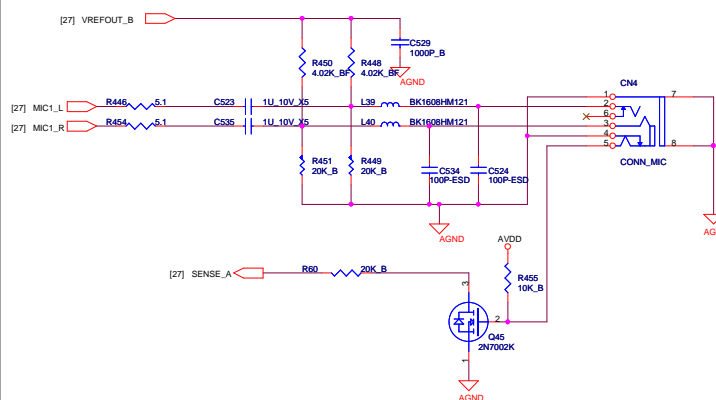


Add on 8/11 for EMI

## Headphone out

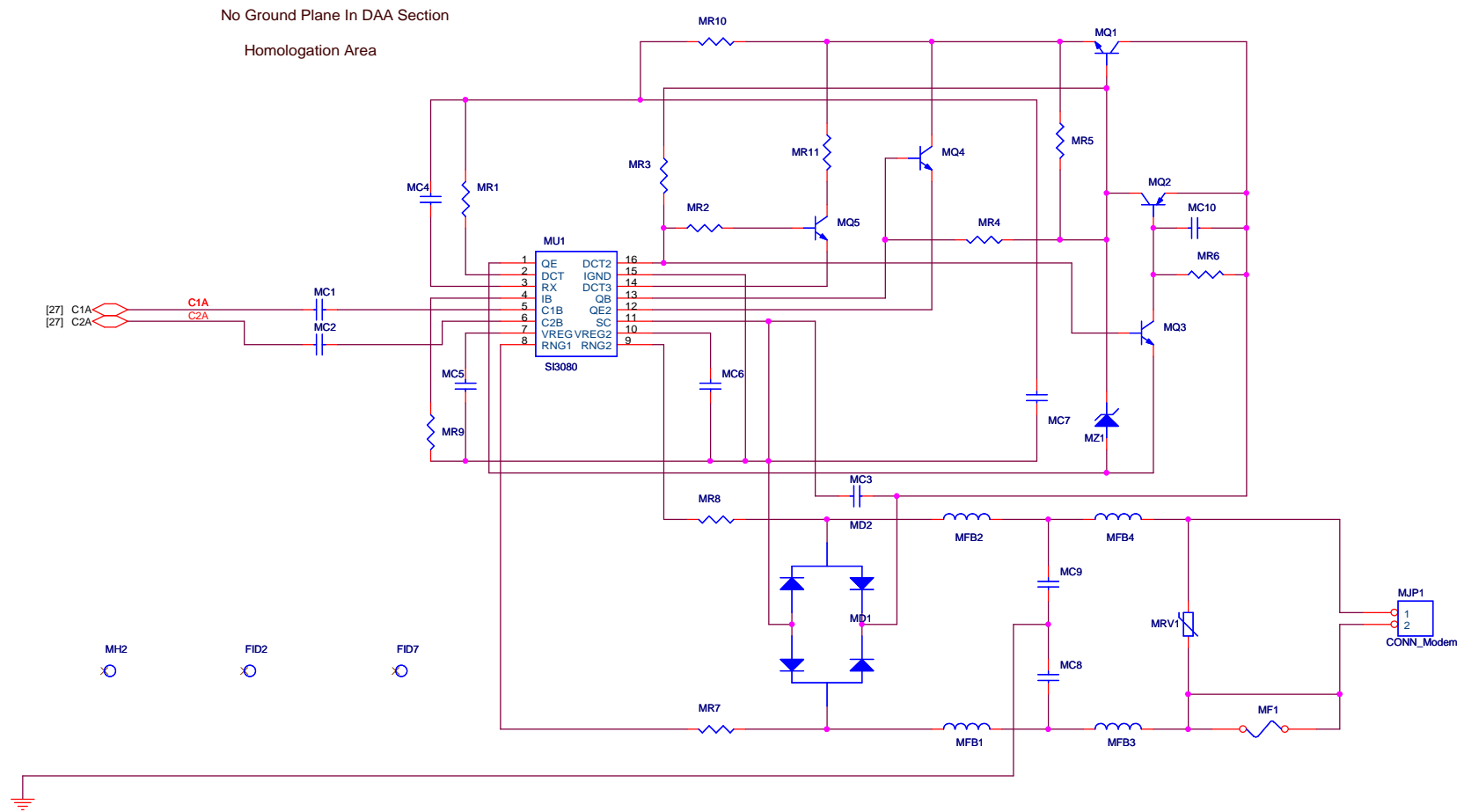



## Mic in



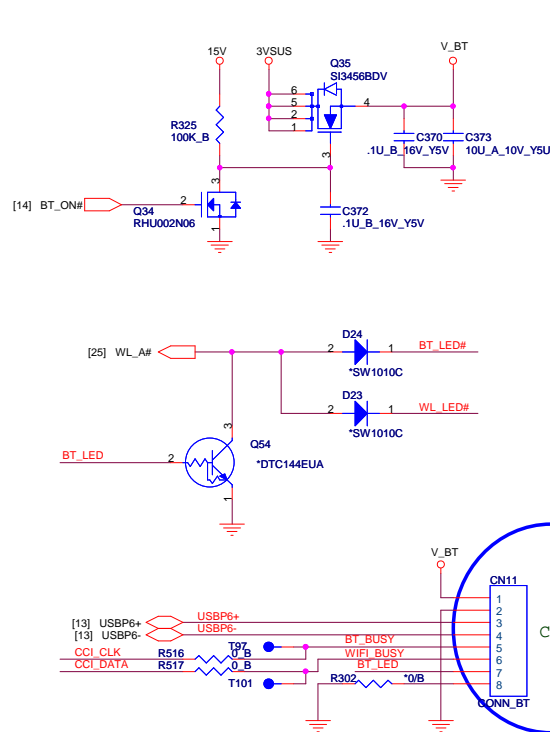
PROJECT : PA6A  
Quanta Computer Inc.

Size C Document Number AMP/AUDIO CONN Rev 3B  
Date: Wednesday, August 23, 2006 Sheet 28 of 40

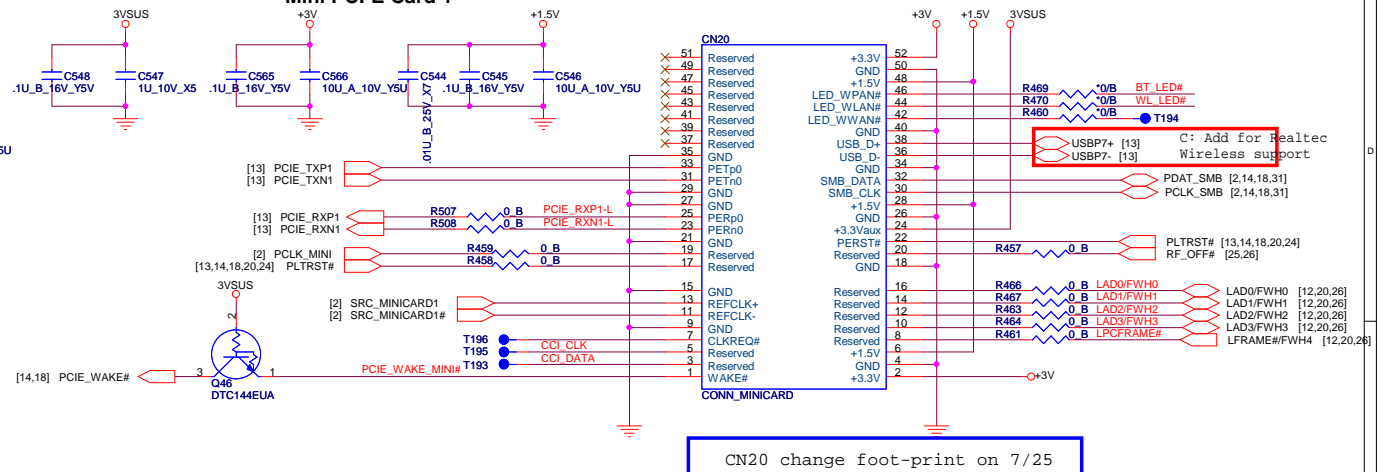


		<b>PROJECT : PA6A</b>	
		<b>Quanta Computer Inc.</b>	
Size B	Document Number DAA/MDC	Date: Wednesday, August 23, 2006	Rev 2A
Sheet 29		of 40	

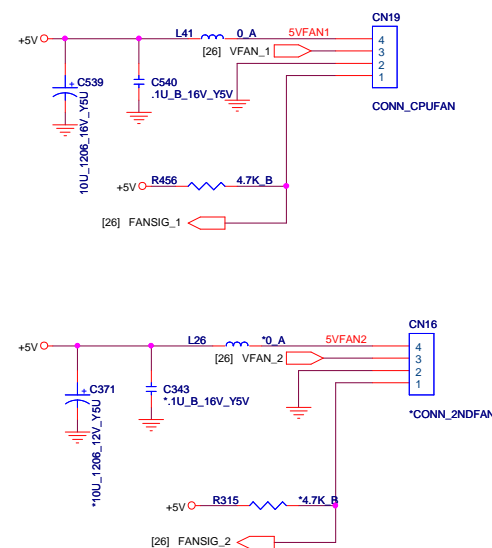
## BLUETOOTH CONNECTOR



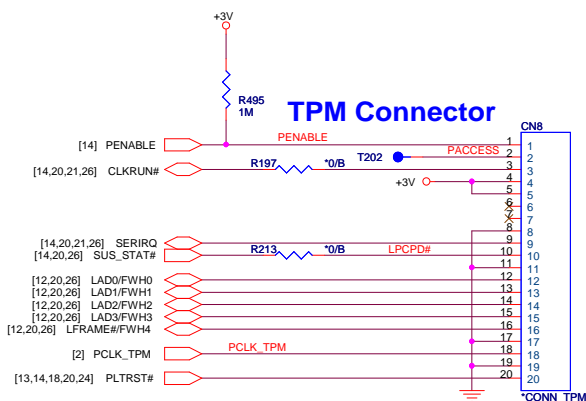
## Mini PCI-E Card 1



Change net name on 7/25

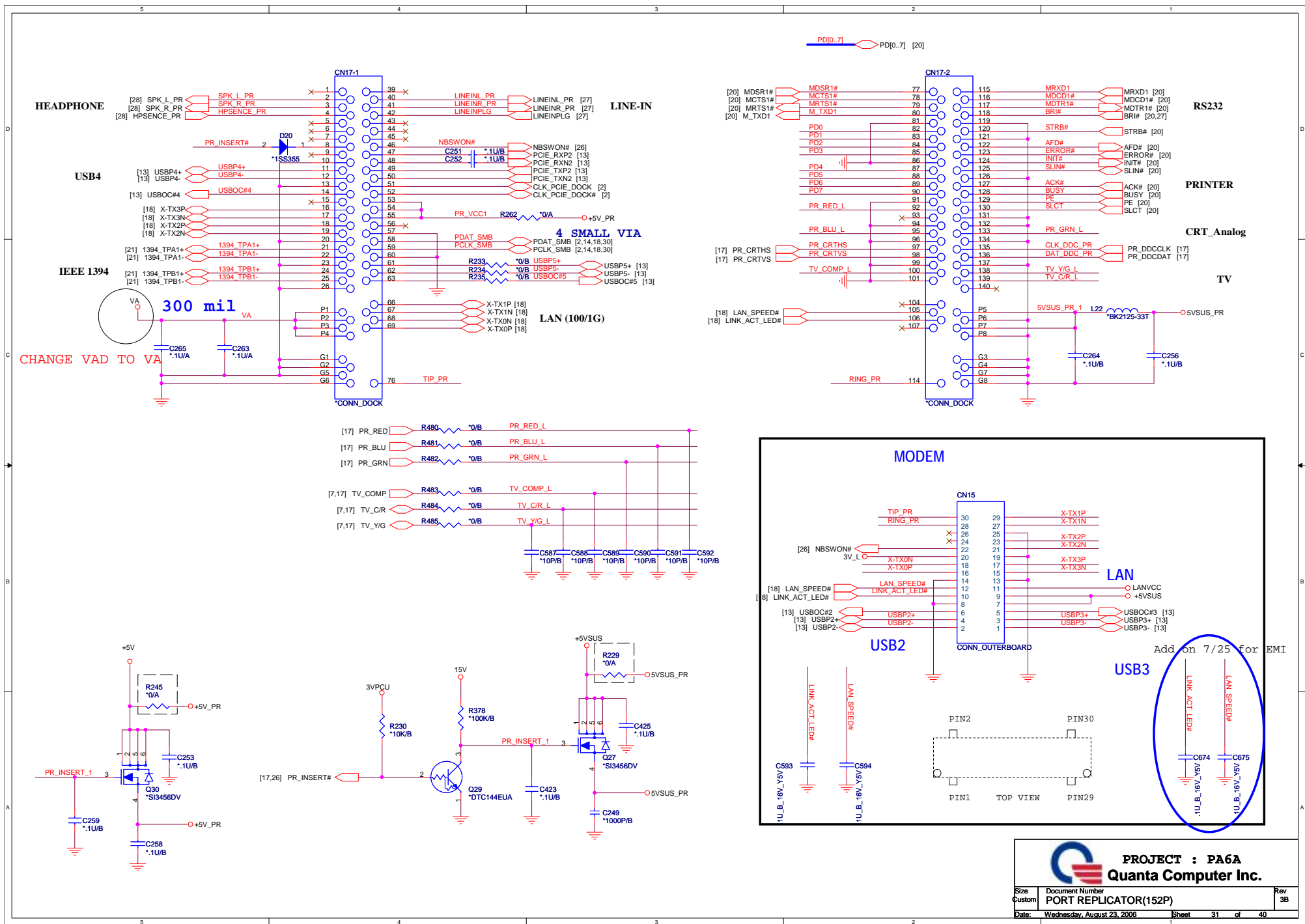


## TPM Connector



PROJECT : PA6A  
Quanta Computer Inc.

Size	Document Number	Rev
Custom	Mini CARD/Bluetooth/FAN/TPM	3B
Date:	Wednesday, August 23, 2006	Sheet 30 of 40

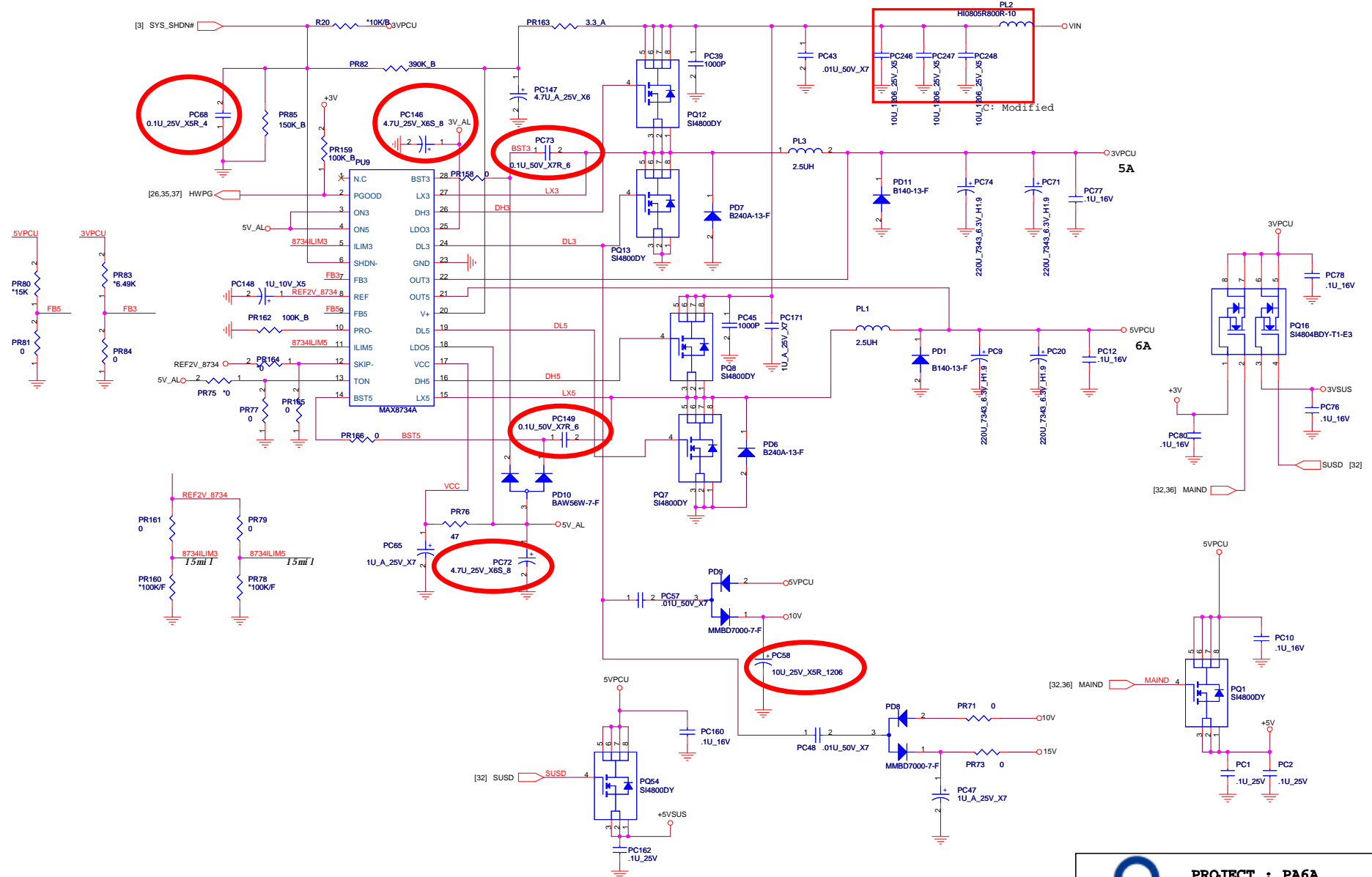







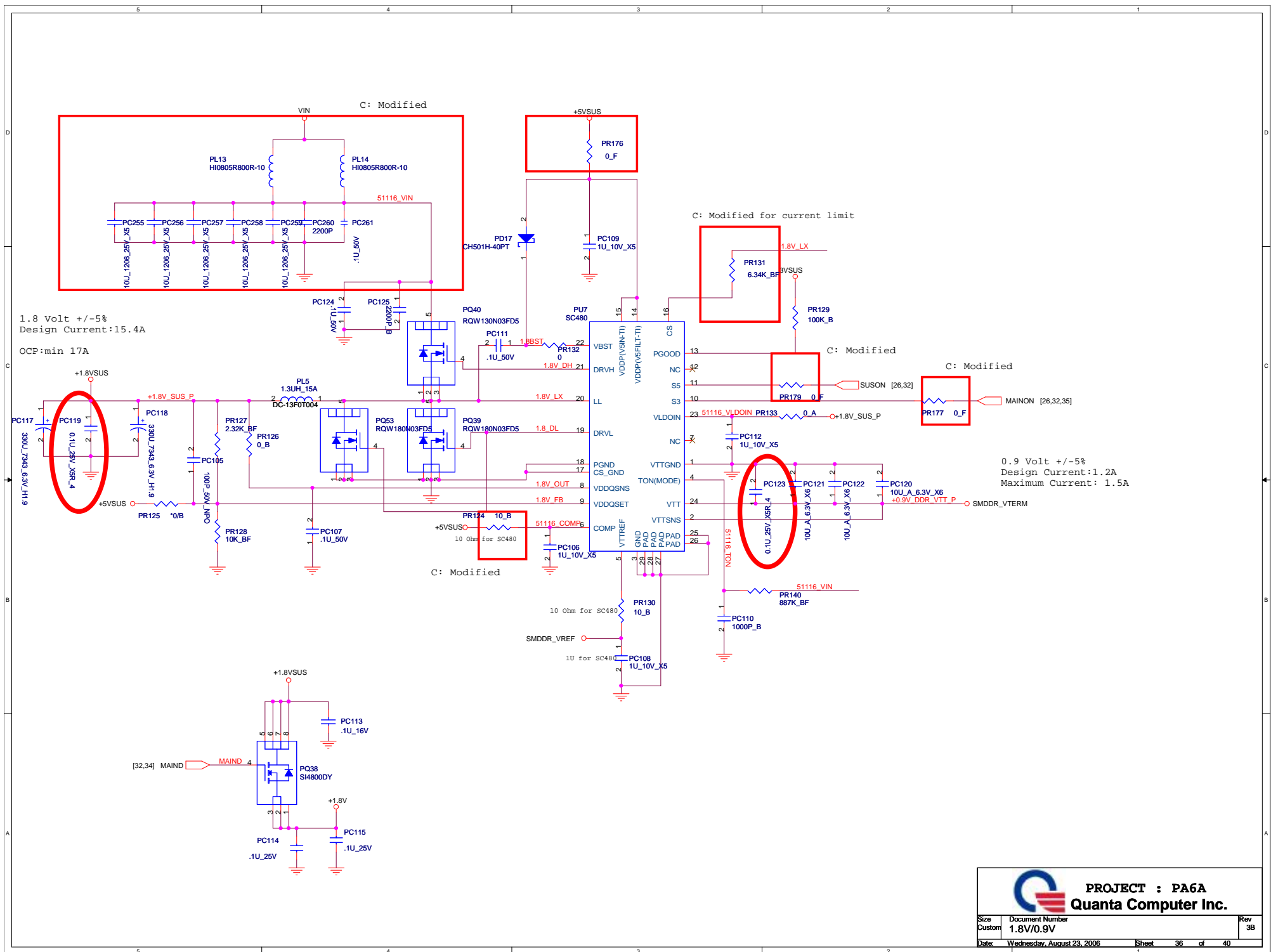


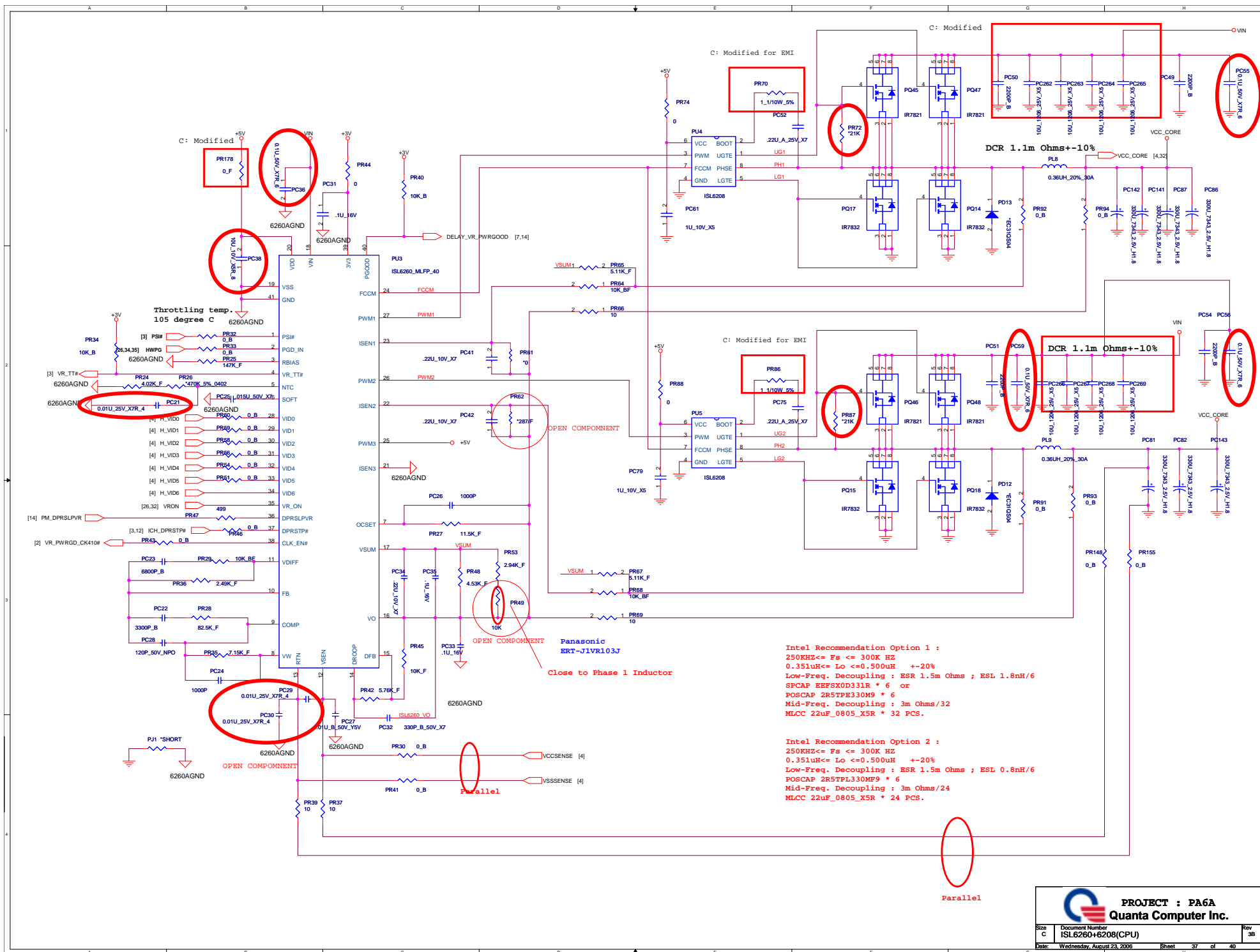
# DC-DC (MAX8734A)



 <b>PROJECT : PA6A</b> <b>Quanta Computer Inc.</b>			
Size Custom	Document Number 3V/5V	Rev 3B	
Date: Wednesday, August 23, 2006	Sheet 34	of 40	







IMVP Spec. Rev. 0.8

(Nom.)	Yonah-2M	Merom
HFM	1.2875 V	1.1500 V
LFM	0.8375 V	0.8375 V
Deeper	0.7625 V	0.7625 V
VBOOT	1.2000 V	1.2000 V
SLOPE	-2.1 mV/A	-2.1 mV/A

(Max.)	Yonah-2M	Merom
HFM	36 A	44 A
LFM	9.5 A	12.5 A
Deeper	3.5 A	5.5 A
Dynamic	27 A	34.5 A
TDC	26 A	32 A

V <sub>0</sub>	VID6	VID5	VID4	VID3	VID2	VID1	VID0
1.5000	0	0	0	0	0	0	0
1.4375	0	0	0	0	1	0	1
1.4000	0	0	0	1	0	0	0
1.3000	0	0	1	0	0	0	0
1.2875	0	0	1	0	0	0	1
1.2000	0	0	1	1	0	0	0
1.1500	0	0	1	1	1	0	0
1.1000	0	1	0	0	0	0	0
1.0000	0	1	0	1	0	0	0
0.9625	0	1	0	1	0	1	1
0.9000	0	1	1	0	0	0	0
0.8375	0	1	1	0	1	0	1
0.8000	0	1	1	1	0	0	0
0.7625	0	1	1	1	0	1	1
0.7500	0	1	1	1	1	0	0
0.7000	1	0	0	0	0	0	0
0.6000	1	0	0	1	0	0	0
0.5000	1	0	1	0	0	0	0
0.3000	1	1	0	0	0	0	0

CCM : Continuous Conduction Mode  
DCM : Dis-Continuous Mode

